

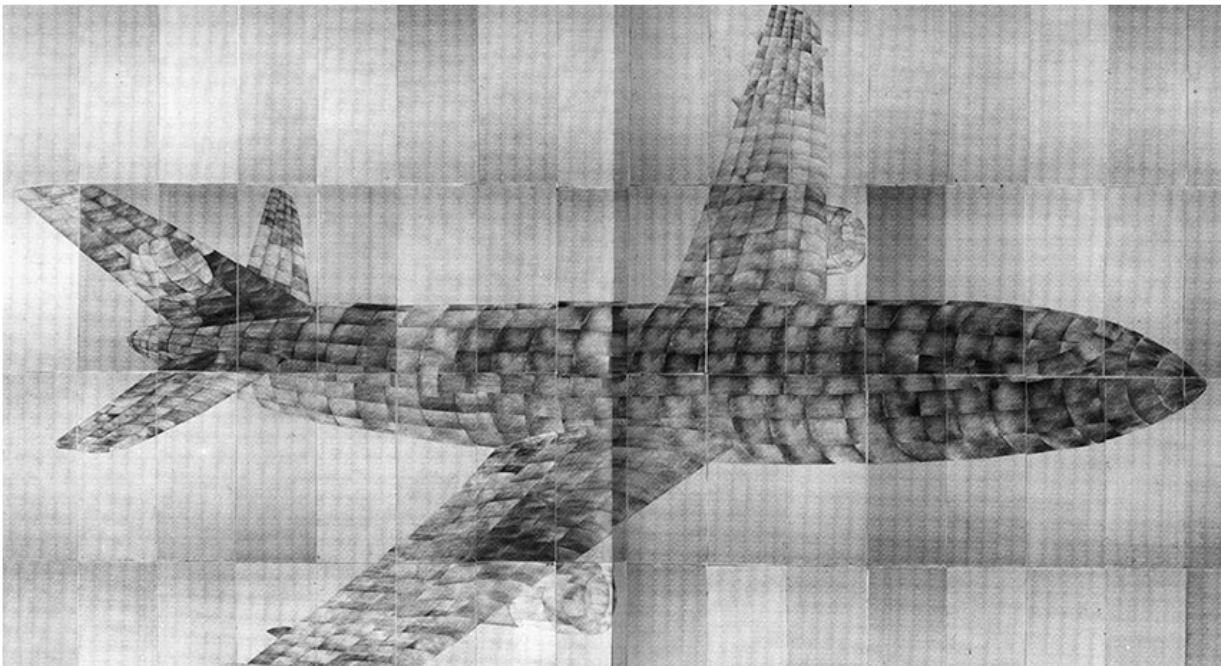
THOMAS BAYRLE PRESENTS FLYING HOME - ARTISSIMA EXPANDS TO TURIN AIRPORT!

Art Exhibitions, Artissima 2016• Elena Martinique

SHARE

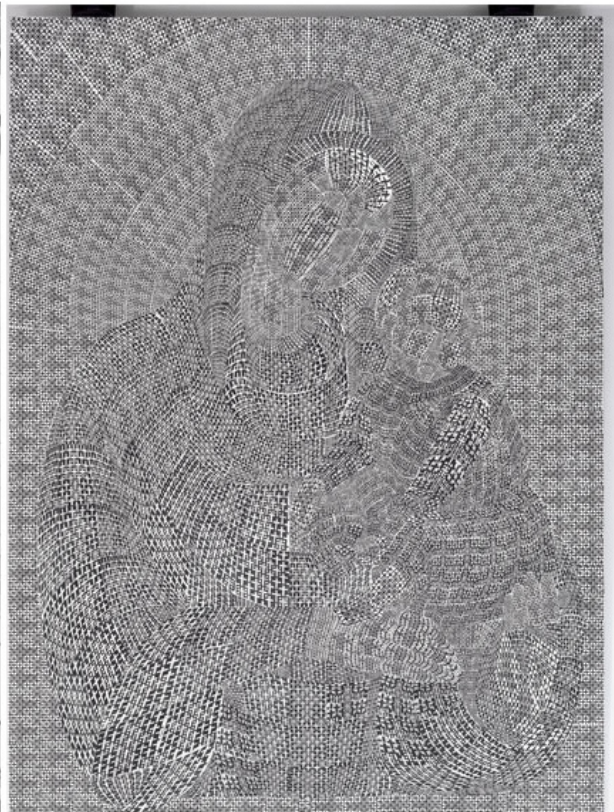
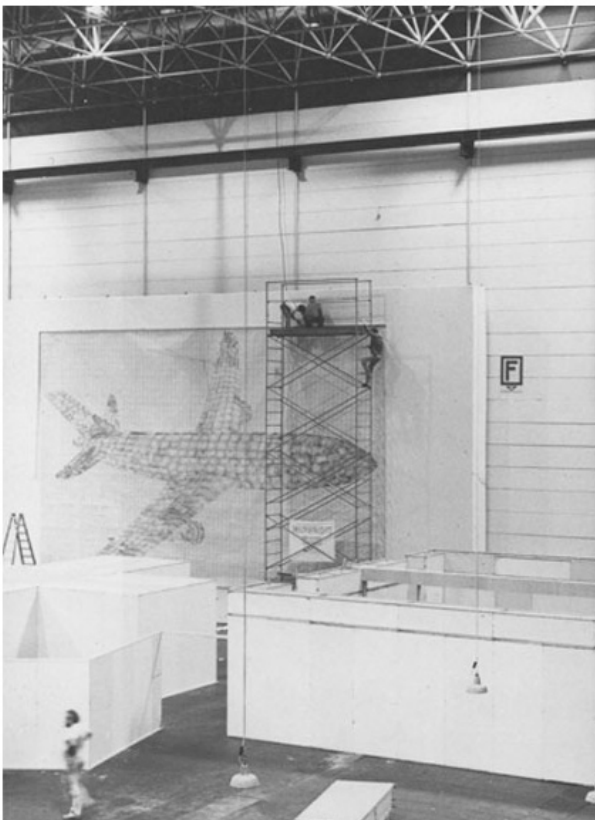


Artissima, Italy's most recognized fair on an international level, returns to Turin for its 23rd edition. As part of the fair's comprehensive program, **Thomas Bayrle** art exhibition *Flying Home* will be presented as a new and unprecedented parallel project. Realized in collaboration with **Torino Airport** and curated by **Sarah Cosulich**, the show will experiment with new models, unexpected places, and different audiences. Specially conceived for the city, this renowned German pop artist will create a **site-specific work** for Torino Airport's baggage claim area, transforming it into an unexpected and stimulating exhibition space deeply imbued with meaning. This is the first time Torino Airport is participating as a partner in an art commission, creating a **surprising cultural initiative**.



Thomas Bayrle Art Practice

Considered a pioneer of the German Pop Art Movement, Thomas Bayrle has been creating images since the 1960s that use the same or related smaller pictures, infinitely repeated as units of a whole. For this reason, he is described as a forerunner of **digital language** before it could have ever been imagined. As a place of transit for thousands of people, **the airport** is a recurring theme in the artist's practice and research. Through his work, he reveals **the dynamics of our society** and a fundamental principle of **repetition** through exploring the way people move through space, economy, technology, or even religion. Drawing, printing, distorting, cutting and uniting units that eventually make up a whole through the process of "artisanal digitalization", Bayrle has built images by hand that computers now process automatically.



Left: Thomas Bayrle – Von Hier Aus 01. Photo Gerald Domenig / Right: Thomas Bayrle – Madonna Cross, 1988. Collage on Wood, 200 x 146 cm. Photo Jens Ziehe

Highlighting the Human Presence

Using a sequence of images, *Flying Home* shows the mechanism of the construction of his seminal piece *Aeroplane* from 1984, a large-scale print of a plane made up of a million small airplanes on a 96-square-metre surface. Fascinated by the message of speed, technology, and the future that airline represented, Bayrle created the **Lufthansa matrix** in 1980, a silkscreen composed of 1,960 small airplanes that became one of the hundreds of models of the monumental *Aeroplane*. Adding the element of human presence, collaboration, interaction, gesture and three-dimensionality into *Flying Home*, the artist highlights the **complex manual process** behind his practice. This also references the **human side of the airport**, something that is often obscured in the functioning of this gigantic machinery.

Thomas Bayrle Art Exhibition at Artissima 2016

Welcoming all travelers by air and art enthusiasts alike, this project connects the city through arts in a rather engaging way. **Artissima 2016** will take place in Turin from November 4th through 6th. As a fair's off-site project, *Flying Home* will be on view from November 4th, 2016 until May 28th, 2017.

Featured images: Thomas Bayrle, Installation of airplane, 2012. Photo Nikolaus Schletterer, dOCUMENTA13, Kassel; Thomas Bayrle – Flugzeug blau, 1982. Litography in four colours, 45,5 x 66 cm on 49 x 69,5 cm paper. Photo Wolfgang Günzel; Thomas Bayrle – Capsule, 1984. 16-piece photocollage on paper, 495 x 640 cm. Photo Wolfgang Günzel; Thomas Bayrle – Airplane, 1982-83. Photocollage, 8 x 13,4 cm. Photo Wolfgang Günzel 2; All images courtesy of Artissima 2016.